

Badeco

2024

SWISS MADE

Manufacturing prestige tools in Geneva Since 1945

Drilling - Grinding - Polishing Stone Setters - Engraving - Carving - Cutting - Hammering Deburring - Slicing - Filling



Research & Development - Technology - Performance - Quality

A whole new dimension for jewellers and the watchmaking industry

EFFICIENCY LEVEL

VI

Since its beginnings in 1945, BADECO has offered its customers Excellence: nothing more!
Sustainability and protect our planet from overconsumption and waste



Be smart....

WARRANTY
5
YEARS

M3 - ASF



The legendary - STURDY

32V 200W 26.5cNm 20'000rpm



Strong: Ø 26mm - 205g - 200W - 26.5 cNm – max 20.000 rpm – for 2 Micromotors

Contents of the kit: **M3ASF Strong** + E2501 + HP464 + PC750

Light: Ø 17mm - 105g - 90W - 15.5 cNm – max 20.000 rpm – for 2 micromotors

Contents of the kit: **M3ASF Light** + E3001 + HP460 + PC750

COMBI "Jewelry": Ø 26mm - 205g - 200W - 26.5 cNm – max 20.000 rpm

Contents of the kit: **M3ASF Strong** + E2501 + HP464+PC750

& Ø 17mm - 105g - 90W - 15.5 cNm – max 20.000 rpm

& **Light** + E3001 + Hammer 518C + PC750



The king of the micromotor since 1975!

The M3ASF is a large metal model with a good grip and robustness.

Its weight calculated on the gravity of the grip of the anodized aluminum handpiece accentuates its reliability and precision.

A side support will allow you to place the micromotor or to fix it to the workbench for example.

It is a very beautiful model of a high quality in its finish.

The finishing details further enhance its ergonomics for the most demanding jobs.

Product Features

Drilling, milling, grinding, polishing, hammering, setting stones, engraving, micro files; With overheating protection; With 2 motor outputs for the alternative use of 2 micromotors; Choice of manual control or use of the pedal; **Strong** (E2501) or **Light** (E3001) with 1,500 to 20,000 rpm; With a multifunctional pedal (ON / OFF and variator); 1 bracket mounted on the housing (second optional)

M3 - ASF



*** Price for a full set: 1x control unit + 1x micromotor Strong or Nano + 1x handpiece Strong or Nano + Foot Pedal PC800 + Lateral bracket + bench holder for Motor

Choice of a STRONG micromotor with the associated handpiece

Ø26mm - 150mm - 205g - 200W - 26.5 cNm - 20'000 Rpm

M3E400

E2501



218C

218SP

3LC050

218USP

3LC100

464

440

288

289



Choice of a LIGHT nanomotor with the associated handpiece

Ø17mm - 120mm - 100g - 90W - 15.5 cNm - 20'000 Rpm



NANO400

E3001



518C

528C

518SP

528SP

5LC050

518USP

528US

5LC100

5B90

460



M4 - ASF2

Professional Performance - STURDY

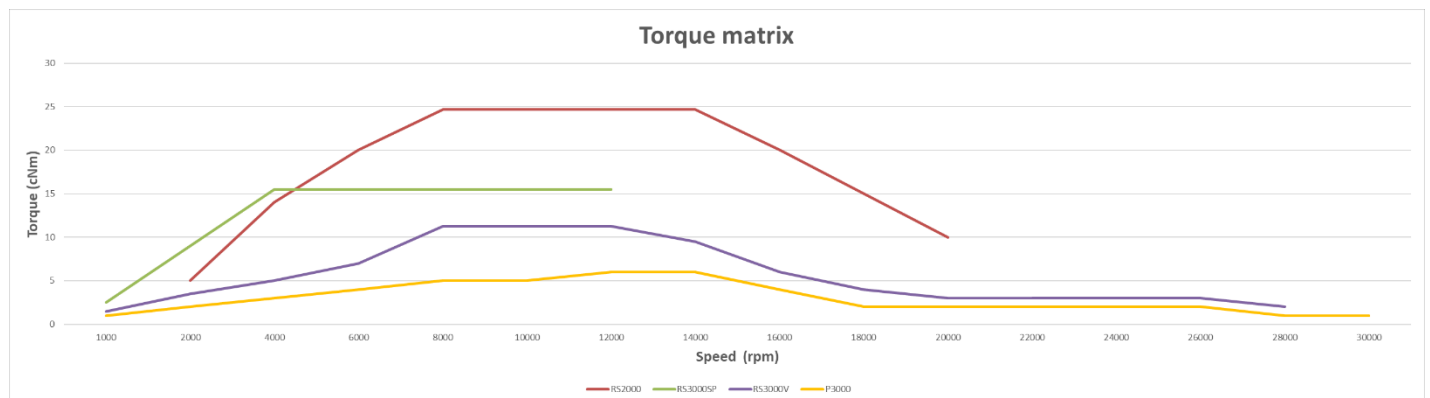
24V 180W 24.7cNm 30'000rpm



The master of the micromotor since 2010

Proven reliability in jewelry and watchmaking for 77 years; Drilling, milling, grinding, polishing, hammering, setting stones, engraving, micro-filing; available with 2 motor outputs for the alternative use of 2 micromotors; Choice of manual control or use of the pedal; Automatic memorization of engine speed in pedal mode and manual mode!

Strong 2,000 to 20,000 rpm; **Light** from 1,500 to 12,500rpm (for SP) or 30,000 rpm (for V); With a multifunction pedal (ON/OFF and variator); 1 support mounted on the housing (second option)



M4 - ASF2



*** Price for a full set: 1x control unit + 1x micromotor Strong or Nano + 1x handpiece Strong or Nano + Foot Pedal PC800 + Lateral bracket + bench holder for Motor

Choice of a STRONG micromotor with the associated handpiece

Ø26mm - 150mm - 205g - 180W - 24.7 cNm - 20'000 Rpm

M4RS400



RS2000



465



450



388



380



318C

3188P

4LC050

318USP

4LC100



Choice of a LIGHT nanomotor with the associated handpiece

Ø17mm - 105mm - 84g - 55W - 11.3 cNm - 30'000 Rpm

RS3000V



Ø17mm - 120mm - 100g - 90W - 15.5 cNm - 12'500 Rpm

RS3000SP



NANO400



518C

5188P

518USP



528C

5288P

528USP



5LC050

5LC100



5B90



MX-1 CARBON

Small, compact AND POWERFUL! - SMART

24V 180W 24.7cNm 30'000rpm



Strong: Ø 26mm - 150mm - 205g - 180W - 24.7 cNm – max 20.000 rpm
Contents of the kit: **MX-1 Strong** + RS2000 + HP465 + PC800

Light SP: Ø 17mm - 120mm - 100g - 90W - 15.5 cNm – max 12.500 rpm
Contents of the kit: **MX-1 Light** + RS3000SP + HP460 + PC800

Light V: Ø 17mm - 105mm - 95g - 55W - 11.3 cNm – max 30.000 rpm
Contents of the kit: **MX-1 Light** + RS3000V + HP460 + PC800

The Starter and Compatible for all motors

The MX-1 is UNIQUE, small, light, handy, powerful, reliable, compact, practical and precise for a very reasonable and very advantageous budget and all in BADECO quality! Choice of manual control or use with foot pedal; Automatic storage of engine speed in pedal mode and in manual mode!

Strong 2,000 to 20,000 rpm; **Light** from 1,500 to 12,500rpm (for SP) or 30,000 rpm (for V); With a multifunction pedal (ON/OFF and variator); – Compatible between Strong and Nano.

MX-1 CARBON



*** Price for a full set: 1x control unit + 1x micromotor Strong or Nano + 1x handpiece Strong or Nano + Foot Pedal PC800 + Lateral bracket + bench holder for Motor

Choice of a STRONG micromotor with the associated handpiece

Ø26mm - 150mm - 205g - 180W - 24.7 cNm - 20'000 Rpm

M4RS400



RS2000



465



450



388



380



318C

3188P

4LC050

318USP

4LC100



Choice of a LIGHT nanomotor with the associated handpiece

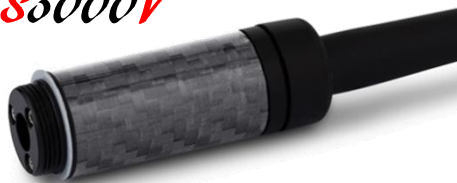
Ø17mm - 105mm - 84g - 55W - 11.3 cNm - 30'000 Rpm

RS3000V

Ø17mm - 120mm - 100g - 90W - 15.5 cNm - 12'500 Rpm

RS3000SP

NANO400



518C

528C

5188P

5288P

5LC050

460

518USP

528USP

5LC100

5B90



MX-2** **Revolt

DESIGN MEETS FUNCTION - SMART

24V 180W 24.7cNm 30'000rpm



With MX-2 Revolt design meets function

The MX-2 is UNIQUE, small, light, handy, powerful, reliable, compact, practical and precise with 2 connects of micromotors and all in BADECO quality!

Save your micromotor or nanomotors with OLED screen, save your speed for each motor and feel the perfection in your hand.

Choice of manual control or use with foot pedal; Automatic storage of engine speed in pedal mode and in manual mode!

Strong 2,000 to 20,000 rpm; **Light** from 1,500 to 12,500rpm (for SP) or 30,000 rpm (for V); With a multifunction pedal (ON/OFF and variator); – Compatible between Strong and Nano.

MX-2 Revolt



*** Price for a full set: 1x control unit + 1x micromotor Strong or Nano + 1x handpiece Strong or Nano + Foot Pedal PC800 + Lateral bracket + bench holder for Motor

Choice of a STRONG micromotor with the associated handpiece

Ø26mm - 150mm - 205g - 180W - 24.7 cNm - 20'000 Rpm

M4RS400



RS2000



465



450



388



380



318C

318SP

318USP

4LC050

4LC100



Choice of a LIGHT nanomotor with the associated handpiece

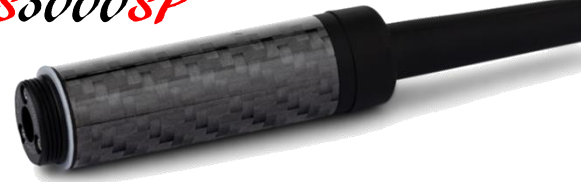
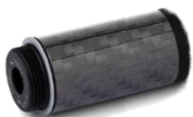
Ø17mm - 105mm - 84g - 55W - 11.3 cNm - 30'000 Rpm

RS3000V

Ø17mm - 120mm - 100g - 90W - 15.5 cNm - 12'500 Rpm

RS3000SP

NANO400



518C

518SP

518USP

528C

528SP

528USP

5LC050

5LC100

5B90



MX-4 Evolution

Increase productivity for 4 motors - SMART

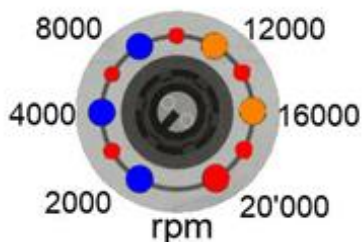
24V 180W 24.7cNm 30'000rpm



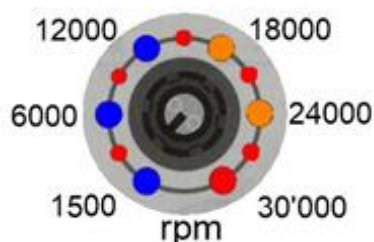
Increase productivity

he MX-4 EVOLUTION is small, light, very powerful, reliable, compact, practical and precise at a very reasonable and advantageous price.; With 4 motor outputs for the alternative use of up to 4 micromotors; The selection is made using a selector switch; Choice of manual control or use of the pedal; Automatic storage of engine speed (1) in pedal mode and in manual mode !; Strong 2,000 to 20,000 rpm; Light from 1,500 to 12,500rpm (for SP) or 30,000 rpm (for V); With a multifunction pedal (ON/OFF and variator); – Compatible between Strong and Nano.

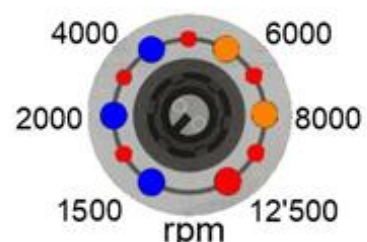
RS2000



RS3000V



RS3000SP



MX-4 Evolution



*** Price for a full set: 1x control unit + 1x micromotor Strong or Nano + 1x handpiece Strong or Nano + Foot Pedal PC800 + Lateral bracket + bench holder for Motor

Choice of a STRONG micromotor with the associated handpiece

Ø26mm - 150mm - 205g - 180W - 24.7 cNm - 20'000 Rpm

M4RS400



RS2000



465



450



388



380



318C

318SP

318USP

4LC050

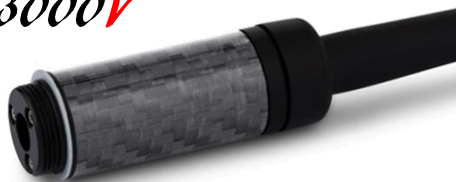
4LC100



Choice of a LIGHT nanomotor with the associated handpiece

Ø17mm - 105mm - 84g - 55W - 11.3 cNm - 30'000 Rpm

RS3000V

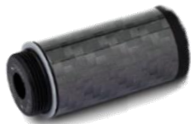


Ø17mm - 120mm - 100g - 90W - 15.5 cNm - 12'500 Rpm

RS3000SP



NANO400



518C

518SP

518USP

528C

528SP

528USP

5LC050

5LC100

5B90



MX-4 TOUCH Evo

Automatic sensor for productivity with 4 motors

24V 180W 24.7cNm 30'000rpm



4 in 1
Gain 30%
of the time per
workstation



Professional Endurance AND SMART!



*Create Your Own MX-4 **TOUCH***



Drilling, milling, grinding, polishing, hammering, setting stones, engraving, micro-filing; 4 motor outputs: The motor is automatically selected via the optical sensors attached to the motor holders; The speeds of the 4 motors are automatically saved in the 2 operating modes (pedal / manual).

The Badeco MX-4 Touch Evolution Dual Voltage 115/230V micromotor has been designed for use in the jewelry and watchmaking industries of Switzerland, the number one producer of super-premium jewelry and watches for the world. What separates this micromotor apart from all others is the quality, precision and reliability of the power box, motor and of course, the handpiece, and the single most important part of a micromotor. The Badeco Carbon Series Micromotor is a remarkable piece of Swiss engineering, giving you unstoppable torque at the lowest speed, the kind of low-end power that jewelers need for drilling and stone setting.

The Badeco MX-4 Touch Evolution control box with handpiece holders activates the single handpiece that you remove from the individual holders. If more than 1 handpiece is removed from the holders the power is stopped. If you wish to operate with empty holders simply block off the photo cell in the unused holder with black tape.

MX-4 Touch Evo



*** Price for a full set: 1x control unit + 1x micromotor Strong or Nano + 1x handpiece Strong or Nano + Foot Pedal PC800 + Lateral bracket + bench holder for Motor

Choice of a STRONG micromotor with the associated handpiece

Ø26mm - 150mm - 205g - 180W - 24.7 cNm - 20'000 Rpm

M4RS400



RS2000



465



450



388



380



318C

3188P

4LC050

318USP

4LC100



Choice of a LIGHT nanomotor with the associated handpiece

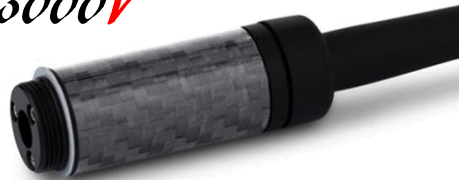
Ø17mm - 105mm - 84g - 55W - 11.3 cNm - 30'000 Rpm

RS3000V

Ø17mm - 120mm - 100g - 90W - 15.5 cNm - 12'500 Rpm

RS3000SP

NANO400



518C

5188P

518USP

528C

5288P

528USP

5LC050

5LC100

5B90



M1 Portable

Mobility and freedom

12V

25W

8.5cNm

30'000rpm



This new product from BADECO is a fully functioning portable nanomotor. The high-speed brush type motor is in the handpiece and the control unit includes a rechargeable battery unit using the latest lithium-ion technology. With the mains charger plugged in you can use it all day long in the workshop or run it on battery power for up to 5 hours, depending on how long the nanomotor is in continuous use when in battery mode. Battery charge time is 3 hours. Using a lithium-ion battery means there is no "memory effect" and even when not used without being charged, the loss of charge is very low, so it's always ready to use, wherever you are. It's great for working in places where there is no electrical supply or when you need to be mobile - such as at a craft demonstration or for last minute polishing at a trade show.

- Control unit with built-in rechargeable Li-ion battery features a digital RPM display at the top that makes it easy to monitor speed as you work.
- The dial on the front adjusts speed from 0 - 30,000 RPM.
- On/off switch with foot pedal PC250 and reversible drive direction.
- Adaptable nanomotor with other connection. (micro-filing)
- Handpiece (motor) is very small and lightweight but has plenty of power for fine detailing, polishing and even grinding on metal, wood, glass and many other materials. Its fan cooled, brush type continuous duty motor runs cool and vibration-free. It has permanently lubricated, shielded ball bearings that require no additional lubrication. Ø17, 105mm, 84gr.
- The handpiece has a twist release rotary type collet for easy changes of 1.60mm, 2.35mm, or 3.00mm shank burs, depending on choice of collet installed.
- Two Year Limited Warranty – One Year for Lithium Battery.

Handpiece (Motor) Specifications: ~105mm Long (Nanomotor with HP), 84gr, Ø12mm (Diameter at grip), Ø17mm (Diameter at nanomotor), Cord Length: 140mm, Output DC12V/2.1A, Torque 8.5cNm, Electric power 25W.

Rechargeable Lithium Ion Battery Specifications: 14.8v 1800mAh - Charging Time: 3 hours, Working Time: 5 hours

Charger/Adapter Specifications: Input: ~100 ~240 Volt, 50/60Hz, Output: DC12V/2A

M1 Portable



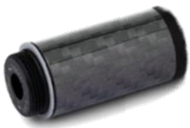
*** Price for a full set: 1x control unit + 1x micromotor Nano + 1x handpiece Nano + Foot Pedal PC250 + bench holder for Motor

Choice of a LIGHT nanomotor with the associated handpiece

Ø17mm - 105mm - 84g - 25W - 8.5 cNm - 30'000 Rpm

**NEW
PRODUCT**

NANO400



P3000



460



518C

518SP

518USP



528C

528SP

528USP



5LC050

5LC100



5B90



Handpieces for hanging motors with Slip joint

**NEW
PRODUCT**

↻ **463**

Quick change HP46 – collet Ø2.35 - >20'000rpm
Light and strong with carbon fiber



↻ **430**

Quick change HP-SSC – collet Ø2.35 - 20'000rpm



↻ **300**

Quick exchange HP MdMI – 20'000rpm
Schucks Ø0 to 4.5mm



↻ **275**

Quick exchangeable HP-MdMI – collet Ø2.35
20'000rpm - Slim and Light
With key



↻ **295**

Quick exchangeable HP-MdMI – collet Ø2.35
20'000rpm - Strong and hardwork
With key



↻ **210 / 215 / 220**

Riveting and setting with tip 240.000
Slim and Light – Ultra precise
210 = Fine stroke
215 = Medium stroke
220 = Strong stroke



↻ **2LC050 / 2LC100**

Polishing and filing with holder 100.300
Easy-file and maneuverability - 3D system
Speed limit 14'000 rpm
Holder for round or plate stick
2LC050 = 0.5mm length
2LC100 = 1mm of length



Handpieces for hanging motors for duplex

↻ **467**

Quick change HP46 – collet Ø2.35 - >20'000rpm
Light and strong with carbon fiber
For Duplex Spring US

**NEW
PRODUCT**

↻ **437**

Quick change HP-SSC – collet Ø2.35 - 20'000rpm
For Duplex Spring US

↵ **212 / 217 / 222**

Riveting and setting with tip 240.000
Slim and Light – Ultra precise

212 = Fine stroke

217 = Medium stroke

222 = Strong stroke

↵ **2LC050 / 2LC100**

Polishing and filing with holder 100.300

Easy-file and maneuverability - 3D system

Speed limit 14'000 rpm

Holder for round or plate stick

2LC050 = 0.5mm lenght

2LC100 = 1mm of lenght

Handpieces for QD connect

↻ **468**

Quick change HP46 – collet Ø2.35 - >20'000rpm
Light and strong with carbon fiber
For Duplex Spring US

**NEW
PRODUCT**

↻ **447**

Quick change HP-SSC – collet Ø2.35 - 20'000rpm
For Duplex Spring US

↵ **214 / 227 / 232**

Riveting and setting with tip 240.000
Slim and Light – Ultra precise

214 = Fine stroke

227 = Medium stroke

232 = Strong stroke

↵ **9LC050 / 9LC100**

Polishing and filing with holder 100.300

Easy-file and maneuverability - 3D system

Speed limit 14'000 rpm

Holder for round or plate stick

9LC050 = 0.5mm lenght

9LC100 = 1mm of lenght

SPB- 84 S1



This polishing machine is a product which has superior technical features and superior differences in many points compared to other devices. It is state-of-the-art touch screen, ergonomic design and easier use, make the device stand out. You can give your own details to the parts by polishing, brushing, dulling and sanding. Resalable cap and removable Plexiglas cover provide to user a safe working area. The reinforced vacuum motor ensures high suction.

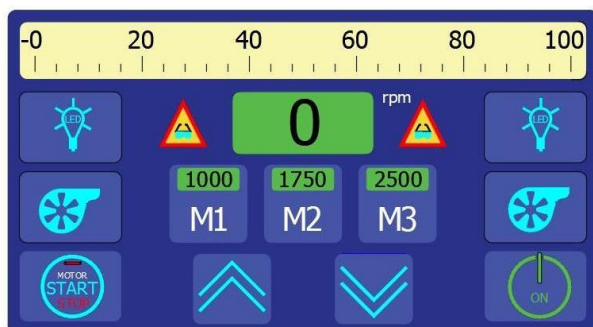


SIEMENS

Danfoss

OSRAM 

Schneider
Electric



- Torque pressure indication
- Double Safety foot pedal
- Plexiglas protection with Safety magnet switch
- Osram - High HD LED Lighting
- Danfoss - Strong Vacuum High Pressure Pumps with 2 filters
- Schneider Electric - Emergency stop
- Siemens automate - High quality with Touch screen memory
- Siemens Simatic HMI Panel -Key and touch operation

Versatile, reliable and consistently awesome

Techn. specifications	SPB-84S1	SPB-84S2
Power supply	230/50Hz	230/50Hz
Engine performance	> 650 W	> 650 W
Speed (rpm)	100 to 4'500 rpm- (Precision +/-10 rpm)	100 to 4'500 rpm- (Precision +/-10 rpm)
Vacuum	750 m3/h	2 x 750 m3/h, for each side
Lighting	4 x 9 LED's 1.600 Lumen	4 x 9 LED's 1.600 Lumen for each side
Brush diameter	160 mm max	160 mm max
Unit dimensions	460mm x 370mm x 460mm	680mm x 390mm x 460mm
Net weight	30 Kg	45 Kg

SPB- 84 82



Techn. specifications	SPB-84S1	SPB-84S2
Power supply	230/50Hz	230/50Hz
Engine performance	> 650 W	> 650 W
Speed (rpm)	100 to 4'500 rpm- (Precision +/-10 rpm)	100 to 4'500 rpm- (Precision +/-10 rpm)
Vacuum	750 m3/h	2 x 750 m3/h, for each side
Lighting	4 x 9 LED's 1.600 Lumen	4 x 9 LED's 1.600 Lumen for each side
Brush diameter	160 mm max	160 mm max
Unit dimensions	460mm x 370mm x 460mm	680mm x 390mm x 460mm
Net weight	30 Kg	45 Kg

Spare parts for polishing bench

POLISHING SPINDEL, LEFT



SPB_84S_G150

SYNTHETIC FIBER FILTER



SPB_84S_G110

PLEXIGLASS PROTECTION GLASS



SPB_84S_G100

POLISHING SPINDEL, RIGHT



SPB_84S_G140

CARDBOARD CARTRIDGE WITH DOUBLE FILTER



SPB_84S_G120

SAFETY CONTACT PEDAL



SPB_84S_PC200SP

Cylindrical wheel arbor



Spindle: Ø16 mm
Washer: Ø 68 mm (2x)
Brush width: 20-40 mm
SPB_84S_G130

LED- LUX-X3



Lighting for the watch industry

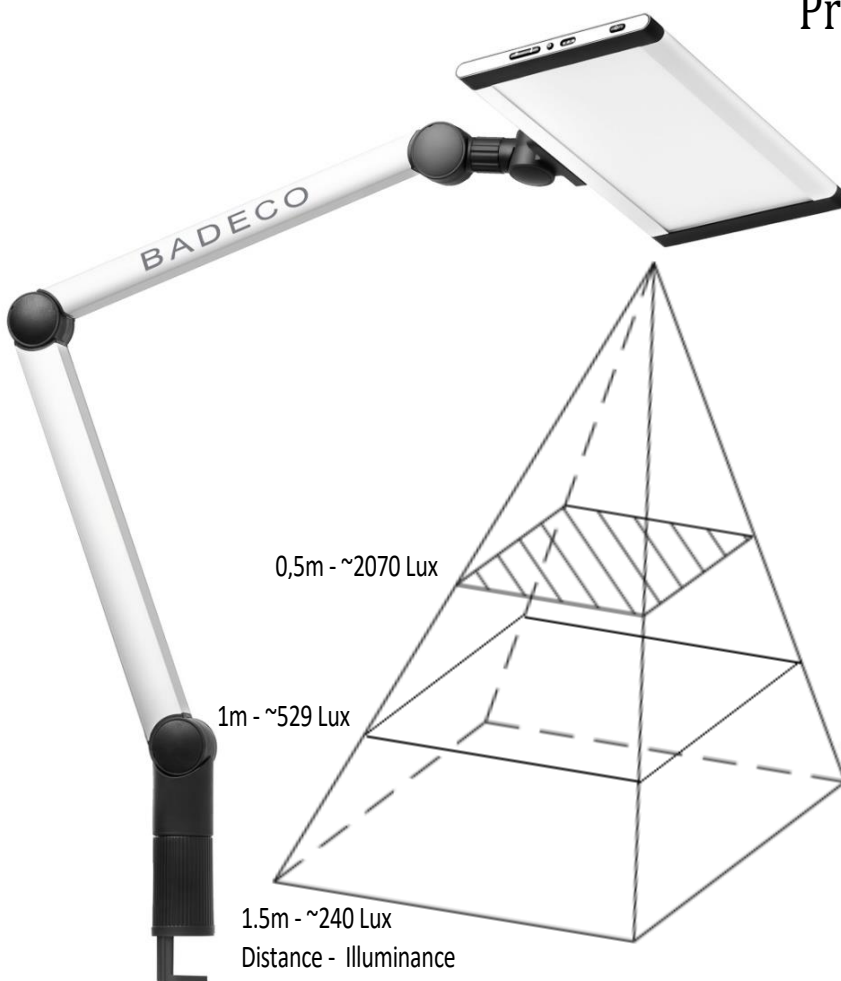
It is precisely for high-precision work, such as in the manufacture of watches, that one needs a lighting at the same time of very high intensity and without formation of shades to allow a work of great concentration and without fatigue. Very often the luminaries used do not allow it but on the contrary produce very large areas of shadows. These zones cause a permanent change in the positioning of the luminaire. The optics of the LUX-x fixture put an end to this problem by not creating perceptible shadow structures (Microstructure - Diffuser).

Product Features

- As an assembly or inspection light with selected lighting technology on an articulated arm
- Flat light with modern look
- Luminous colors: Tunable white from 3,000 to 6,500 K, with or without an integrated control unit
- Beam angle: Micro structure with diffuser (106°)
- Mounting variants: Articulated arm with universal clamp, drilling screw fitting or screw-on mounting
- Special features: shortened upper articulated arm enables even more flexible adjustment; anti-glare strip prevents direct glare in case of close-up work.

Technical Data

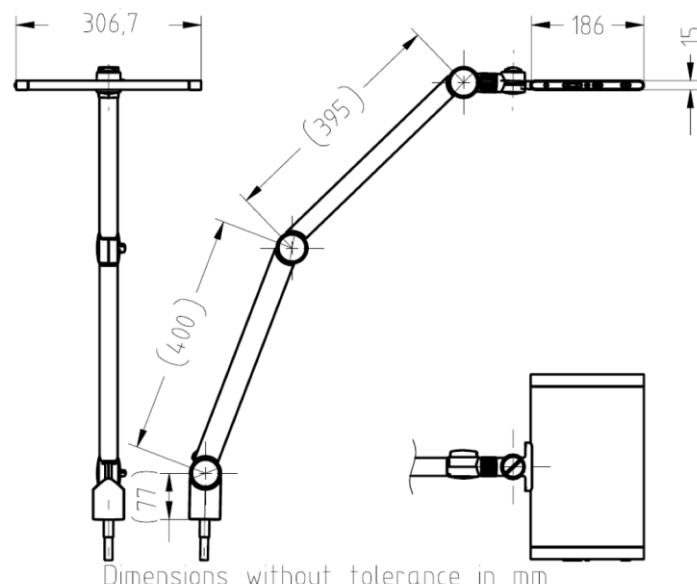
- Nominal voltage: 24 W @ 48 VDC
- Operating temperature: -20 ... +40 °C
- Degree of protection : IP20
- Color Rendering Index CRI 90
- Power supply included – Mean Well



No noticeable shadows

Due to the redirection of the light beams through more than 100,000 microlenses, high luminance levels in the prism are prevented and a homogeneous light distribution is achieved. The effect of shadow formation in the work area is reduced to a minimum, even if the light exit opening is partially covered.

This means that multiple shadows, which are not popular with LED lighting solutions, cannot occur.



LED Bino-90



Great Climate!

LED technology reduces heat emission. The LED light allows working comfortably even in high ambient temperatures. Moreover, there is no risk of hand burns when touched. A sophisticated thermal management guarantees a lamp lifetime of up to 50,000 operating hours. Thus, maintenance costs are minimized.

The storage locations are programmed with the following values on delivery:

Storage location 1: cold white (approx. 6,500K), maximum brightness

Storage location 2: warm white (approx. 3,000K), maximum brightness

Storage location 3: mixed white (approx. 4,500K), maximum brightness



Mounting possibilities for articulated arm

The articulated arm has been specially designed for table / bench work. The vice mounts directly on the table.

The modes of attachment are multiple according to the types of work to be done. (Clamp, central fixing to screw, fixing for existing hole). The articulated arm allows exact positioning of the devices.



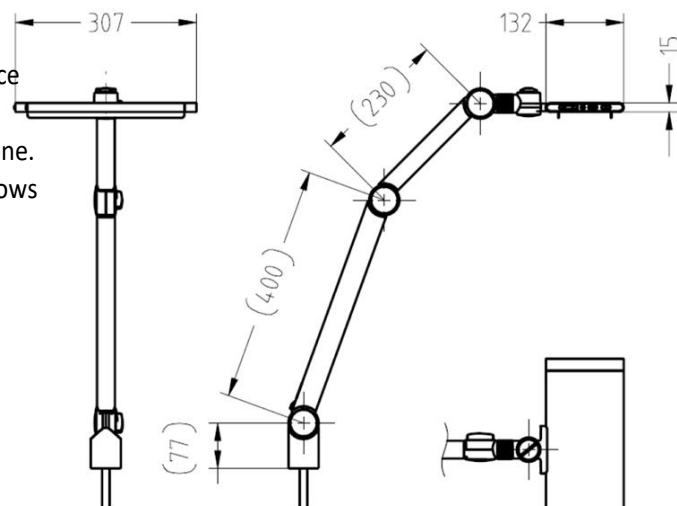
External clamp



Drilling screw fitting




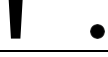

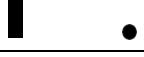
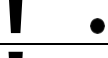

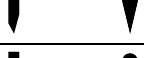
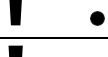






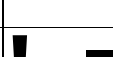








Static screw-in plate


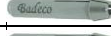
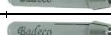


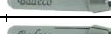
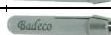





Dimensions without tolerance in mm




Accessories for Mallet – Original silver steel Hardened tips

240.000	Unhardened Tip Ø 4.00 mm		248.100*	Tip Rectangle Smooth Ø0.50 x 1.00 mm		250.250	Tip High speed steel Round Ø 2.50 mm	
240.050*	Tip Round Smooth Ø 0.50 mm		248.150	Tip Rectangle Smooth 0.80 x 1.50 mm		260.250	Tip Super carbide Round Ø 2.50 mm	
240.100*	Tip Round Smooth Ø 1.00 mm		248.200	Tip Rectangle Smooth 1.00 x 2.00 mm		254.250	Tip High speed steel Ø 2.50 mm x 45°	
240.210*	Tip Round Smooth Ø 2.10 mm		248.250*	Tip Rectangle Smooth 1.20 x 2.50 mm		264.250	Tip Super carbide Angle 45 Ø 2.50 mm x 45°	
240.250	Tip Round Smooth Ø 2.50 mm		249.250	Tip Rectangle Grooved 1.20 x 2.50 mm		260.240	Universal hammer graver tool Ø 2.40 mm	
241.210	Tip Round Grooved Ø 2.10 mm		246.210*	Tip Oval Grooved 2.10 x 1.20 mm		260.320	Universal hammer graver tool Ø 3.20 mm	
242.080	Tip Round Concave Ø 0.80 mm		244.100*	Tip Square Smooth 1.00 x 1.00 mm				
242.100*	Tip Round Concave Ø 1.00 mm		244.160*	Tip Square Smooth 1.60 x 1.60 mm		230.000	Box of 9 diff. hardened Tips* 240.050 + 240.100 + 240.210 244.100 + 244.160 + 246.210 248.100 + 248.150 + 248.250	

Accessories for handpieces – Original concentric Hardened collet




Chuck for MdMi 275-295-288-289-380-388			
	Ø0.55 mm		055012
	Ø0.80 mm		055021
	Ø1.05 mm		055030
	Ø1.55 mm		055039
	Ø1.65 mm		570684
	Ø2.05 mm		055048
	Ø2.35 mm		054373
	Ø2.55 mm		055057
	Ø3.05 mm		055066
	Ø3.20 mm		054075

Accessories for MdMi 275-295-288-289-380-388		
	Md274 Nut of clamp	 054367
	C200 Quick changing chucks Ø 0 to 4,5mm	 560055
	290.000 Set of 9 collets 0.55 - 0.80 - 1.05 1.55 - 2.05 - 2.35 2.55 - 3.05 - 3.20	 560004

Chuck for HP46 460-463-464-465-467-468		
	Ø1.60mm	 614911
	Ø2.35mm	 614910
	Ø3.00mm	 614908

Chuck for 430 - 437 - 440 - 450		
	400SSC Quick exchange kit Ø2.35m	 054516
	400SSC Quick exchange kit Ø3.05m	 614770
	Ø2.35mm	 054517
	Ø3.05mm	 614767

Accessories for micro-files

100.300	Universal tool holder for Micro-Fill	
Ceramic and diamond Stick (Thick x Wide x Length (mm) - Grit (G))		*price per grit & size
CB-0.5	Ceramic stick 0.5x2x150 (G400; 600; 800; 1000; 1200)* (ex CB-0.5 -G400)	
CB-1	Ceramic stick 1x2x150 (G400; 600; 800; 1000; 1200)* (ex CB-1 -G400)	
CB-4	Ceramic stick 1x4x100 (G120; 220; 300; 400; 600; 800; 1000; 1200)* (ex CB-4 -G120)	
DB-4	Diamond stick 1x4x100 (G200; 400; 800)* (ex DB-4 -G200)	
Ceramic and diamond round (Thick x Wide x Length (mm) - Grit (G))		*price per grit & size
CR Ø 2.35	Ceramic round Ø 2,35 x 50 (G220; 300; 400; 600; 800; 1000; 1200)* (ex CR-4 -G220)	
DR Ø 3.00	Diamond round Ø 3.00 x 50 (G400)* (ex DR-4 -G400)	

Accessories for control unit

Holder foot screw on table
MX



Arms articulated with 2 arms
MX-SF2



Foot support for screw MX
MX-x



Magnetic holder for MX with
1 articulation Holder
MX-SF



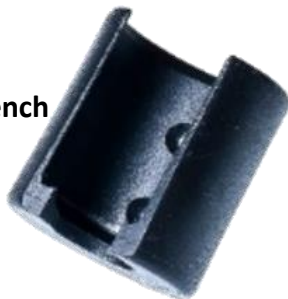
Lateral magnetic bracket
MAG_026 (Strong)
(For RS2000 & E2500)
MAG_017 (Nano)
(For RS3000 & E3000)



Bench Holder
ASF-021



Lateral bracket holder
For screw on unit or bench
M4_026 (Strong)
(For RS2000 & E2500)



Lateral bracket holder –
For screw on unit or bench
Nano_017 (Nano)
(For RS3000 & E3000)



Foot pedal double
function COMBI
(on/off & vario)
M3ASF => **PC750**
M4ASF2 => **PC800**
MX1 => **PC800**
MX2 => **PC800**
MX4 => **PC800**



Foot pedal contact On/off for
M3ASF => **PC100**
M4ASF2 => **PC200**
MX1 => **PC200**
MX2 => **PC200**
MX4 => **PC200**



THE WORLD'S FIRST REVERSIBLE CLASP

Swiss know-how and French expertise give birth to this innovation

Discover



FP SYSTEM

A clasp for every identity



CLASSIQUE

Simply upscale and comfortable



BIJOUTIER

A diamond setting for a unique clasp



PRESTIGE

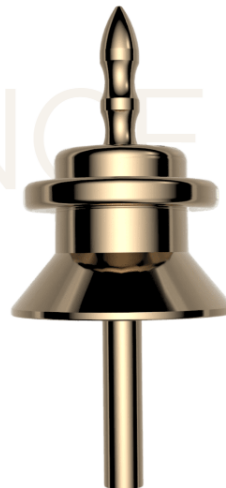
Endless customization possibilities



ELEGANCE AND INTELLIGENCE COMBINED

Elegant and luxurious, the FP SYSTEM is the first clasp to incorporate reversible technology, offering a level of comfort never seen before in the world.

These engravings and crimps offer a unique design and elegance that make it stand out from the crowd.



SWISS MADE



BADECO SA

Rue de la Coulouvrenière 8
1204 Genève - Suisse
Tél. +41 22 329 01 91
www.badeco.com
info@badeco.com

Since its beginnings in 1945,
BADECO has offered its
customers Excellence: nothing
more! Sustainability and
protect our planet from
overconsumption and waste



Be smart....